

# PYTHON C INSTALLATION GUIDE



## INSTALLATION APPLICATIONS:

- CAVITY WALLS
- MASONRY VENEERS

## TOOLS AND ACCESSORIES REQUIRED:

- T40 Torx Driver
- PYTHON 6mm Masonry Drill Bit
- 7/16" (10mm) Masonry Drill Bit (for countersinking)
- Rotary Drill
- Impact Driver

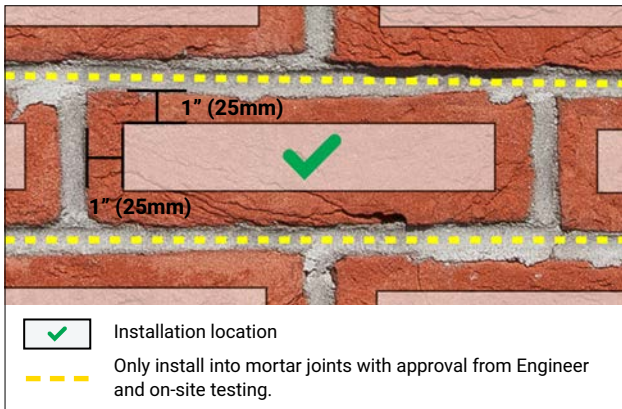
Note: this is not an exhaustive list of applications, if you're unsure about an application, please contact us at [info@pythonfasteners.com](mailto:info@pythonfasteners.com)

Patent Pending

All rights reserved. © 2024 Terremoto Ltd.

This file may not be reproduced in whole or in part without the prior written approval of PYTHON Fasteners. Last update: Mar 2024. Supersedes all previous versions. Visit [www.pythonfasteners.com](http://www.pythonfasteners.com) for latest version.

# INSTALLATION OF PYTHON C INTO CAVITY WALLS OR VENEERS



- 01** Mark the location for screw installation on the brick, at least 1" (25mm) from the brick edge.



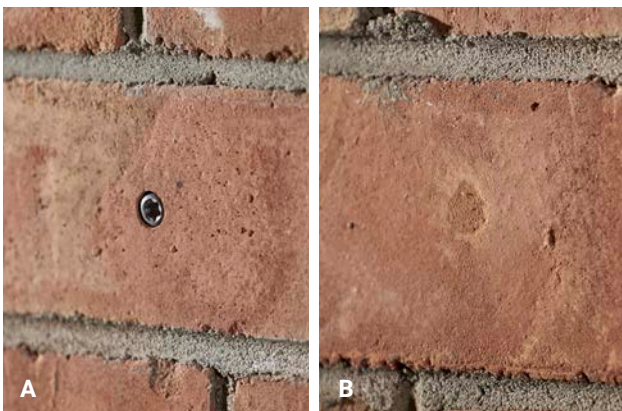
- 02** Drill an approx. 10" (250mm) deep pilot hole with a 6mm diameter PYTHON masonry drill bit and rotary only drill.



- 03** To countersink the screw head, drill a 1/4" (6mm) deep hole with a 7/16" (10mm) diameter masonry drill bit and rotary only drill.



- 04** Install the PYTHON C using a TORX T40 bit and impact driver.



- 05** A. Leave head exposed. Or;  
B. Cover head with colour matched putty as per architectural specification.