

PYTHON C INSTALLATION GUIDE



INSTALLATION APPLICATIONS:

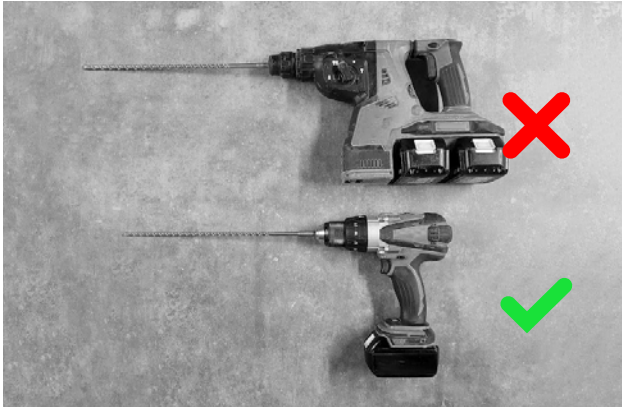
- DOUBLE BRICK WALLS
- MASONRY VENEERS

Note: this is not an exhaustive list of applications, if you're unsure about an application, please contact us at info@pythonfixings.com.au or 1800 PYTHON.

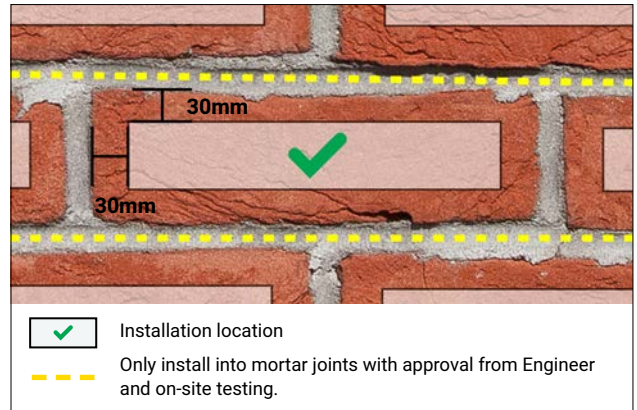
TOOLS AND ACCESSORIES REQUIRED:

- T40 Torx Driver
 - 6mm Masonry Drill Bit
 - 10mm Masonry Drill Bit
 - Low Impact Hammer Drill or Rotary only Drill
 - Impact Driver
-

INSTALLATION OF PYTHON C INTO DOUBLE BRICK WALLS



A low impact hammer drill (non-SDS) or rotary only drill must be used for drilling into all masonry materials.



01 Mark the location for screw installation on the brick, at least 30mm from the brick edge.



02 Drill an approx. 250mm deep pilot hole with a 6mm diameter masonry drill bit.

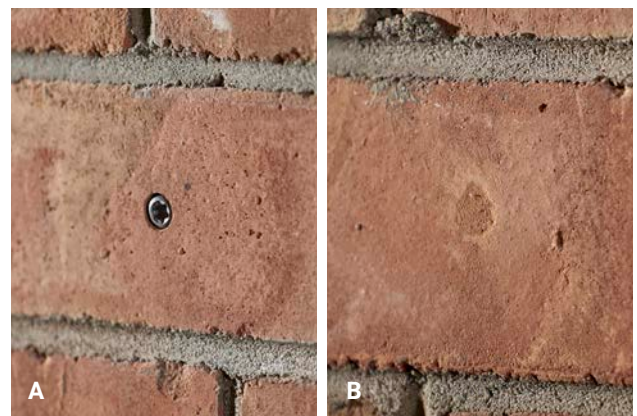
WARNING: If you are using a PYTHON masonry spear drill bit, a rotary only drill must be used.



03 To countersink the screw head, drill a 7mm deep hole with a 10mm diameter masonry drill bit.



05 Install the PYTHON C using a TORX T40 bit and impact driver.



06 A. Leave head exposed. Or,
B. Cover head with colour matched putty as per architectural specification.